

NAAC ACCREDITATION CYCLE: 2
SELF STUDY REPORT

CRITERION IV
INFRASTRUCTURE AND LEARNING
RESOURCES

4.3 IT Infrastructure
Metric No- 4.3.1



Submitted to
National Assessment and Accreditation Council (NAAC)



MAULI GROUP OF INSTITUTION'S
COLLEGE OF ENGINEERING AND TECHNOLOGY, SHEGAON





**LATE PURUSHOTTAM HARI (GANESH) PATIL SHIKSHAN SANSTHA'S
MAULI GROUP OF INSTITUTION'S, COLLEGE OF ENGINEERING AND TECHNOLOGY**

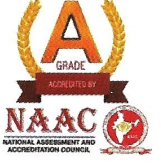
(Approved by AICTE, New Delhi and Govt of Maharashtra, Affiliated to SGB Amravati University, ISO 9001:2015 Certified)

College Code : EN : 1265 Khamgaon Road, Shegaon. Dist Buldhana. Pin Code: 444 203

Web: mauligroup.org

Contact: 7722027506

Email: maulicoet@gmail.com



Dr. C. M. Jadhao
(Principal)

Mr. D. P. Patil
(Chairman)

Ref No: _____

Date: 24/05/2024

Declaration

This is to declare that the information, reports, true copies and numerical data etc, furnished in this file as supporting documents are verified by IQAC and found correct.

Hence this certificate.

Dr. P. M. Ardhapurkar
IQAC Coordinator
IQAC Coordinator
Mauli Group of Institutions
College of Engineering &
Technology, Shegaon

Dr. C. M. Jadhao
Principal
PRINCIPAL
Mauli Group of Institutions
College of Engineering &
Technology, Shegaon

Additional Information Related IT Infrastructure

The components of IT infrastructure are made up of interdependent elements, and the two core groups of components are hardware and software. Hardware uses software—like an operating system—to work. And likewise, an operating system manages system resources and hardware.

Operating systems also make connections between software applications and physical resources using networking components. Hardware components include Desktop computers, Servers, Data centers, Hubs, Routers, Switches, Facilities.

Institute has 375 computers on the campus. In addition to regular use, sufficient number of computers is allocated to all departments with necessary software and hardware configuration.

❖ CCTV NVR, DVR Racks:

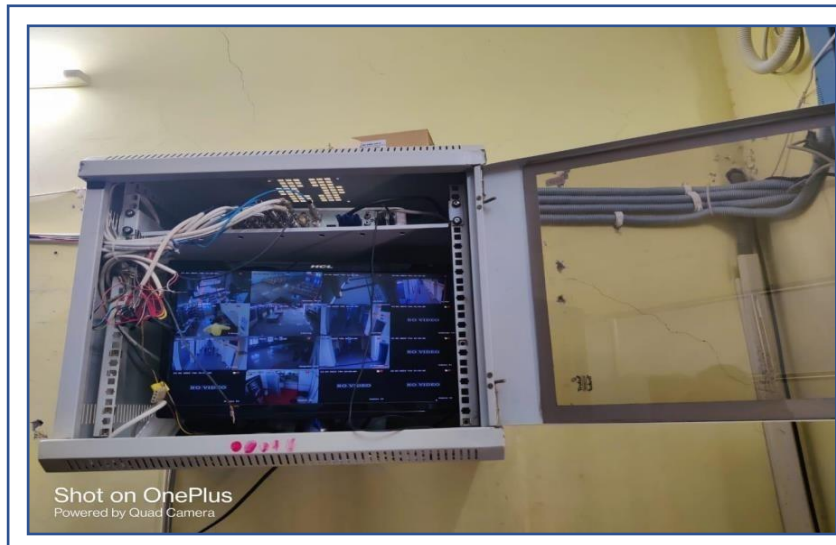


Fig 1: DVR Rack

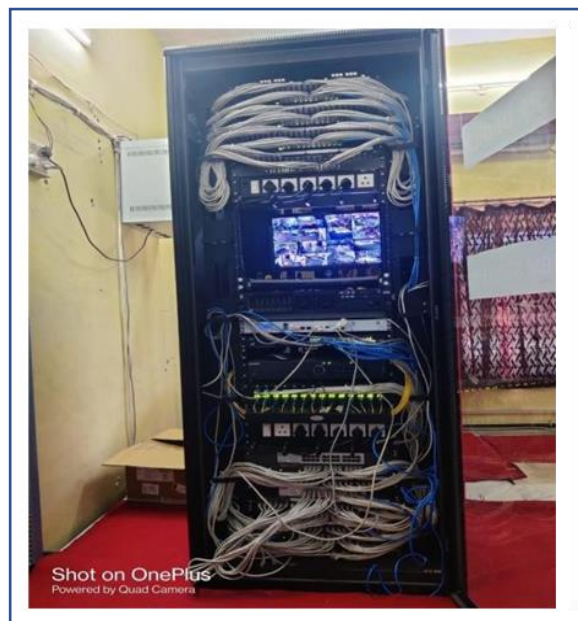


Fig 2: Server Rack

College installed 4 CCTV DVR Racks & 50 Cameras around campus. The safety of our students is of prime importance. Our campus is monitored under 24X7 CCTV surveillance to keep a track of the activities of our students and also to get aware of any unnatural occurrences.

Our hostels are also equipped with CCTV cameras to confirm the safety of the students. The monitoring becomes highly intense on special days of occasions and events. Besides, the wardens and matrons also account for the security and well-being of our students. Besides, all other corners of the college including laboratories, seminar halls, library and more, are vigorously monitored to ensure campus security.

The recordings of the CCTV are in the hands of the most trusted authorities of the college to make sure no hindering is done. Additionally, the live recordings of the camera are under the constant watch of the guards of our college to spot any unnatural activities and address them then and there.

❖ Firewall: Sophos Model No XG210

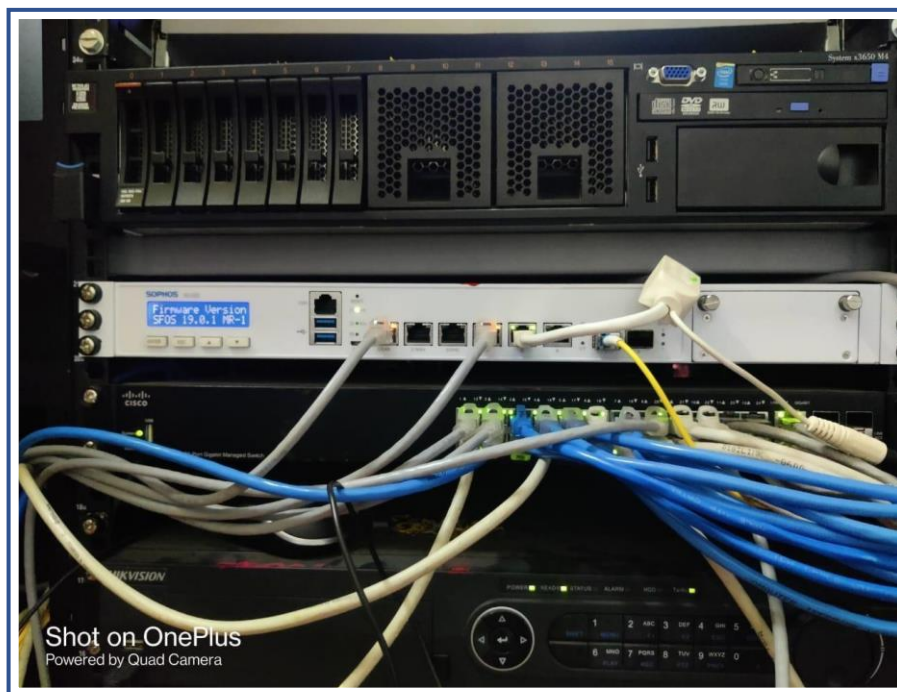


Fig 3: Firewall

❖ Network Security-

Internet facility is available through Sophos XG210 Firewall, to provide safe and secure Internet service to all end users. User Identity Base Internet Browsing provided to all our network users. This firewall security consists of VPN (SSL VPN & IPSec), gateway level anti-virus, anti-spam, Intrusion Prevention System, Web Content Filtering, Bandwidth Management and multiple link management. With the help of Sophos firewall, log of all internet users is maintained. Approximate live users are 100 in peak hours.

Ethernet BACK BONE: Network Consists of more than 20 manageable / unmanaged Cisco, D-Link switches, Wi-Fi Access Points. Network Backbone is consisting of around 1000 mtr Optical Fiber Cable.

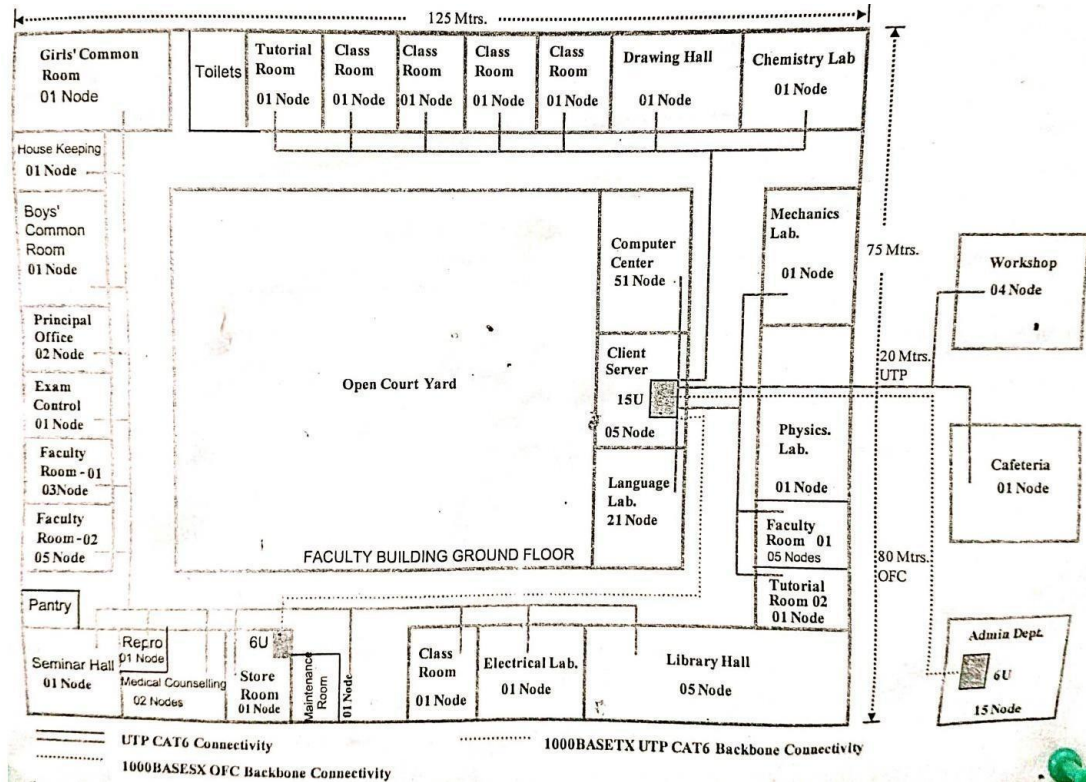


Fig 4: Network Diagram

UPS Backup

We acknowledge the hassles caused due to interrupted power backup system and hence to overcome this problem our institute has a dedicated HT power supply, Generator backup and 3*10 KVA UPS devoted to the Computer System, Server Room, CCTV & Network Racks.



Fig 4: UPS Backup

SN	UPS	Laboratory	No. Of PCs
1	UPS 1	Computer Center	50
		OOPs Lab	20
2	UPS 2	WebTech Lab	23
		DBMS Lab	22
		HW Lab	23
3	UPS 3	Server Room	07
		Seminar Halls	01
		Principal Office	03

- **Server Hosted in Server Room:**

MATLAB SERVER

Tally Server

NPTEL Server

- **Server Room Services**

1. In-House Network Installation and Maintenance.
2. In-House Hardware Installation and Maintenance.
3. In-House Website Designing / Development / updating and maintenance of institutes websites.